

**Peterson Equipment
Company, Inc.**

Product Guide

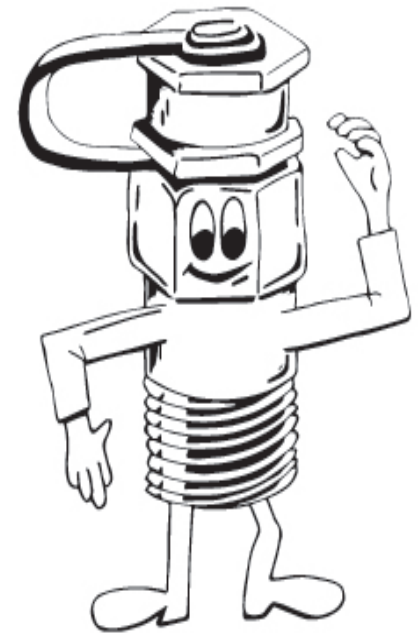
www.PetesPlug.com

The Pete's Plug® Legacy

In 1965, Charles "Pete" D. Peterson, Jr. invented a device to help utility people quickly take pressure readings. With the support of his wife, Bonnie, and children, he decided to become an entrepreneur to fulfill a need in the natural gas and HVAC industry. Pete started designing and manufacturing the plugs in his garage and ran the business from a small table in his master bedroom. The business quickly grew and in 1969 Pete formed his own company, Peterson Equipment Co., Inc. to design, develop, and produce pressure and temperature test plugs.

Pete's inventions include the most popular pressure and temperature reading plugs used today with a 1/4" NPT brass housing. This Pete's Plug® allows for the use of a 1/8" diameter pressure needle to be used without becoming bent or clogged like other standard needles. Importantly, the Pete's Plug® also has two self closing valves for rapid sealing upon removal of the needle or temperature probe. A second plug was developed with a 1/2" NPT housing that would allow pressure & temperature readings using a bi-metal thermometer. Pete strengthened his original design with a simple but important feature of a rubber strap to keep the plug cap attached to the plug body for easier and longer use out in the field. The "Pete's Plug" is offered in brass and stainless steel with norel or neoprene cores.

The "Pete's Plug®" is used by the Natural Gas & Hydronic Industries as well as in numerous other applications. Thank you in part to our wonderful sales representatives around the world, the sales of the Pete's Plug® are over 38+ Million units in the last 53+ years and is the standard pressure or temperature test plug used by many companies and industries throughout the world. Today, the Pete's Plug® and all Peterson Equipment Co., Inc.'s products are manufactured by hand. The products are produced in the United States of America. Our main plant is located in Houston, Texas. Pete's company is still a family owned and operated business.



Pete's Plug® Brass Products: Section A



Product: #100
Core: Neoprene
Thread: 1/4" NPT
Length: 1 1/2"



Product: #110
Core: Nordel
Thread: 1/4" NPT
Length: 1 1/2"



Product: #100XL
Core: Neoprene
Thread: 1/4" NPT
Length: 3"



Product: #110XL
Core: Nordel
Thread: 1/4" NPT
Length: 3"



Product: #300
Core: Neoprene
Thread: 3/8" NPT
Length: 1 1/2"



Product: #310
Core: Nordel
Thread: 3/8" NPT
Length: 1 1/2"

For purchasing and project quotes, please contact your local Pete's Plug® Sales Representative.
For more information, email Info@PetesPlug.com or call 281-646-9100.

Pete's Plug® Brass Products: Section B



Product: #562
Core: Neoprene with Buna-N O-Ring Sealant
Thread: 9/16" NPT
Length: 1 1/2"



Product: #572
Core: Nordel with Buna-N O-Ring Sealant
Thread: 9/16" NPT
Length: 1 1/2"



Product: #700
Core: Neoprene
Thread: 1/2" NPT
Length: 1 1/2"



Product: #710
Core: Nordel
Thread: 1/2" NPT
Length: 1 1/2"



Product: #700XL
Core: Neoprene
Thread: 1/2" NPT
Length: 3"



Product: #710XL
Core: Nordel
Thread: 1/2" NPT
Length: 3"

For purchasing and project quotes, please contact your local Pete's Plug® Sales Representative.
For more information, email Info@PetesPlug.com or call 281-646-9100.

Pete's Plug® Brass Products: Section C



Product: #750
Core: Neoprene with Buna-N
O-Ring Sealant
Thread: 3/4" - 16 NPT
Length: 1 1/2"



Product: #760
Core: Nordel with Buna-N
O-Ring Sealant
Thread: 3/4" - 16 NPT
Length: 1 1/2"



Product: #900
Core: Neoprene
Thread: 1/4" NPT
Length: 1 1/5"



Product: #910
Core: Nordel
Thread: 1/4" NPT
Length: 1 1/5"



Product: #100BSP
Core: Neoprene
Thread: 1/4" BSP
Length: 1 1/2"



Product: #12500
Core: Neoprene
Thread: 1/8" NPT
Length: 1 1/4"

For purchasing and project quotes, please contact your local Pete's Plug® Sales Representative.
For more information, email Info@PetesPlug.com or call 281-646-9100.

Pete's Plug® Brass Products: EZ-Port Test Valves



Product: #200
Core: Neoprene
Thread: .570"
5/8-18 UNF-2A
Length: 1.06"



Product: #210
Core: Nordel
Thread: .570"
5/8-18 UNF-2A
Length: 1.06"

For purchasing and project quotes, please contact your local Pete's Plug® Sales Representative.
For more information, email Info@PetesPlug.com or call 281-646-9100.

Pete's Plug® 316 Stainless Steel Products



Product: #400
Core: Neoprene
Thread: 1/4" NPT
Length: 1 1/2"



Product: #410
Core: Nordel
Thread: 1/4" NPT
Length: 1 1/2"



Product: #800
Core: Neoprene
Thread: 1/2" NPT
Length: 1 1/2"



Product: #810
Core: Nordel
Thread: 1/2" NPT
Length: 1 1/2"

For purchasing and project quotes, please contact your local Pete's Plug® Sales Representative.
For more information, email Info@PetesPlug.com or call 281-646-9100.

Pete's Plug® Gauge Adapters – 1/4" NPTF



Product: #500
Brass Gauge
Adapter with 1/8"
Probe



Product: #500XL
Brass Gauge
Adapter with 1/8"
Probe for XL Plugs



Product: #510
Brass Gauge
Adapter with
1/16" Probe



Product: #510S
Brass Gauge
Adapter with
1/16" Probe



Product: #520
All Stainless Steel
Gauge Adapter
with 1/8" Probe

For purchasing and project quotes, please contact your local Pete's Plug® Sales Representative.
For more information, email Info@PetesPlug.com or call 281-646-9100.

Pete's Plug® Pressure & Temperature Test Kits



Product: #1500

Pressure & Temperature Test Kit
0-100psi

Included in Kit:

- Pressure Gauge
- Thermometer #601
- Thermometer #603
- #500 - 2 Quantity
- Test Kit Case



Product: #1500XL

Pressure & Temperature Test Kit
0-100psi for XL Pete's Plugs®

Included in Kit:

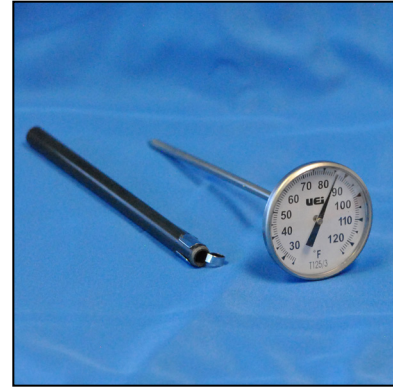
- Pressure Gauge
- Thermometer #601
- Thermometer #603
- #500XL - 1 Quantity
- Test Kit Case

For purchasing and project quotes, please contact your local Pete's Plug® Sales Representative.
For more information, email Info@PetesPlug.com or call 281-646-9100.

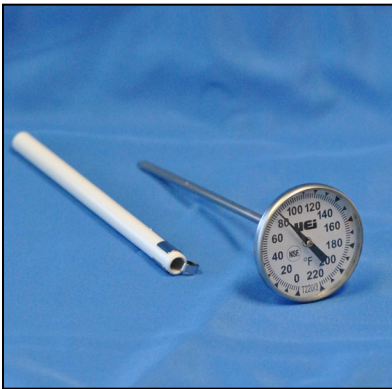
Pete's Plug® Thermometers



Product: #600
-40 to 160 Degrees
Fahrenheit with a
1 3/4" Dial Face
Stem Diameter: .156"



Product: #601
25 to 125 Degrees
Fahrenheit with a
1 3/4" Dial Face
Stem Diameter: .156"



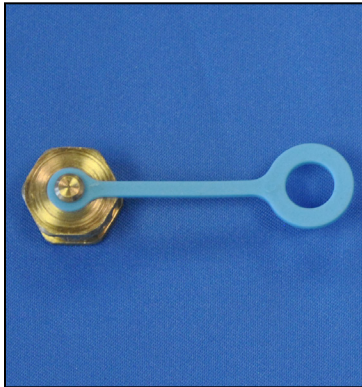
Product: #603
0 to 220 Degrees
Fahrenheit with a
1 3/4" Dial Face
Stem Diameter: .156"



Product: #606
-58 to 550 Degrees
Fahrenheit with a
Digital Display
Stem Diameter: .156"

For purchasing and project quotes, please contact your local Pete's Plug® Sales Representative.
For more information, email Info@PetesPlug.com or call 281-646-9100.

Pete's Plug® Accessories



Product: #104-1BS
Cap Assembly with a
Black Neoprene
Gasket & Blue Strap



Product: #104-1YS
Cap Assembly with a
Red Nordel Gasket &
Yellow Strap



Product: #1600
One Quart Oiler
and Spout plus Hose
Assembly



Product: #1600 - S
Oiler Spout Hose
Assembly Only



Product: Pressure Gauge
0 - 100 PSI
3 1/2" Dial
Stem Diameter: 1/4" NPT

For purchasing and project quotes, please contact your local Pete's Plug® Sales Representative.
For more information, email Info@PetesPlug.com or call 281-646-9100.

Pete's Plug® Chemical Compatability - Neoprene (Excellent)

1) Adipic Acid	38) Copper Cyanide	76) Magnesium Hydroxide	112) Triethanolamine
2) Aero Lubriplate	39) Copper Sulfate	77) Magnesium Sulfate	113) Water
3) Alcohol	40) Cyclohexanol	78) Malt Beverages	114) Water-Brine, Process, Beverage
4) Alkaline Solutions	41) Diethylene Glycol	79) Mash	
5) Aluminum Nitrate	42) Ethylene Diamine	80) Mercury	115) Water Distilled
6) Aluminum Sulfate	43) Ethylene Glycol	81) Methyl Alcohol	116) Water Fresh
7) Ammonia Anhydrous	44) Ferric Nitrate	82) Milk	117) Whiskey
8) Ammonium Carbonate	45) Ferric Sulfate	83) Molasses	118) Wine
9) Ammonium Hydroxide	46) Fluoboric Acid	84) Monochloroacetic Acid	119) Zinc Sulfate
10) Ammonium Nitrate	47) Freon C318	85) Nickel Chloride	
11) Ammonium Persulfate	48) Freon K-142B	86) Nickel Sulfate	
12) Ammonium Phosphate	49) Freon PCA	87) Nitrogen	
13) Ammonium Sulfate	50) Freon 113	88) Oxygen	
14) Anti-Freeze (Alcohol Based)	51) Freon 114	89) Picric Acid	
15) Arsenic Acid	52) Freon 114B2	90) Potassium Chloride	
16) Barbeque Sauce	53) Freon 115	91) Potassium Cyanide	
17) Barium Chloride	54) Freon 12	92) Potassium Dichromate	
18) Barium Hydroxide	55) Freon 13	93) Potassium Nitrate	
19) Barium Sulfate	56) Freon 13BL	94) Potassium Sulfate	
20) Barium Sulfide	57) Freon 14	95) Propyl Alcohol	
21) Beer	58) Freon 22	96) Rum	
22) Beer (Alcohol Ind.)	59) Freon 31	97) Salicylic Acid	
23) Beer (Beverage Ind.)	60) Freon 32	98) Silicone Oil	
24) Beet Sugar Liquids	61) Freon 502	99) Silver Cyanide	
25) Borax	62) Gasoline (Aviation)	100) Silver Nitrate	
26) Boric Acid	63) Gelatin	101) Sodium Bicarbonate	
27) Butane	64) Glucose	102) Sodium Bisulfite	
28) Calcium Chloride Saturated	65) Glue	103) Sodium Borate	
29) Calcium Hydroxide - 10%	66) Glycerine	104) Sodium Chloride	
30) Calcium Nitrite	67) Glycol	105) Sodium Cyanide	
31) Cane Juice	68) Honey	106) Sodium Hydroxide (Caustic Soda-Lye) [To 50% Concentrations]	
32) Cane Sugar Liquors	69) Hydrogen Gas	107) Sodium Hypochlorite	
33) Carbonic Acid	70) Ink (Printers)	108) Soy Sauce [To 50% Concentrations]	
34) Castor Oil	71) Isobutyl Alcohol	109) Sugar Liquids	
35) Chocolate Syrup	72) Ketchup	110) Tannic Acid	
36) Cider (Apple Juice)	73) Lactic Acid	111) Transmission Fluid, Type A	
37) Citric Acid Concentrated	74) Lime Sulfur		
	75) Magnesium Chloride		

For purchasing and project quotes, please contact your local Pete's Plug® Sales Representative.
For more information, email Info@PetesPlug.com or call 281-646-9100.

Pete's Plug® Chemical Compatability - Neoprene (Good)

1)	Acetamide	36)	Gallic Acid	74)	Tung Oil
2)	Acetic Anhydride	37)	Hexane	75)	Vinegar
3)	Acetylene	38)	Hydraulic Fluid (Petroleum)	76)	Water, Acid Mine
4)	Aerosafe1AC			77)	Water, Salt
5)	Aeroshell 17 Grease	39)	Hydrazine		
6)	Aeroshell 7A Grease	40)	Hydrogen Sulfide Wet		
7)	Animal Oil (Lard Oil)	41)	Isooctane		
8)	Anti-Freeze (Glycol Base)	42)	Isopropyl Alcohol		
9)	Asphalt	43)	JP-X		
10)	Automatic Brake Fluid	44)	Lard Oil (Cold)		
11)	Automatic Transmission Fluid	45)	Lard Oil (Hot)		
12)	Beet Sugar Liquors	46)	Lead Acetate		
13)	Benzene Sulfonic Acid	47)	Linseed Oil		
14)	Benzyl Alcohol	48)	Lubricating Oil		
15)	Brake Fluid (Non-Petroleum)	49)	Methane		
16)	Carbon Dioxide	50)	Methyl Acetate		
17)	Carbon Monoxide	51)	Mineral Oil		
18)	China Wood Oil (Tung Oil)	52)	Nitric Acid - 10%		
19)	Chlorox (Bleach)	53)	Nitric Acid Dilute		
20)	Cod Liver Oil (Fish Oil)	54)	Nitromethane		
21)	Cottonseed Oil	55)	Palmitic Acid		
22)	Creosote Hot	56)	Perchloric Acid		
23)	Detergent Solutions	57)	Potassium Acetate		
24)	Detergents General	58)	Potassium Hydroxide		
25)	Diethylamine	59)	Propane		
26)	Ethane	60)	Salt Water		
27)	Ethanolamine	61)	Sea Water		
28)	Ethylene Chlorohydrin	62)	Sewage		
29)	Fatty Acids	63)	Shellac (Bleached)		
30)	Fluosilicic Acid	64)	Shellac (Orange)		
31)	Formaldehyde	65)	Soap Solutions		
32)	Freon BF	66)	Sodium Acetate		
33)	Freon 112	67)	Stearic Acid		
34)	Freon 21	68)	Sulfite Liquor		
35)	Fuel Oil	69)	Sulfur Dioxide Gas Wet		
		70)	Sulfurous Acid		
		71)	Tartaric Acid		
		72)	Tetra Ethyl Lead		
		73)	Transformer Oil		

For purchasing and project quotes, please contact your local Pete's Plug® Sales Representative.
For more information, email Info@PetesPlug.com or call 281-646-9100.

Pete's Plug® Chemical Compatability - Nordel (Excellent)

1) Acetaldehyde	40) Borax	76) Freon 22	117) Potassium Cyanide
2) Acetamide	41) Boric Acid	77) Freon 31	118) Potassium Dichromate
3) Acetic Acid	42) Brake Fluid	78) Freon 32	119) Potassium Hydroxide
4) Acetic Acid Glacial	(Non-Petroleum)	79) Freon 502	120) Potassium Nitrate
5) Acetone 70° F	43) Calcium Chloride	80) Gelatin	121) Potassium Sulfate
6) Acetophenone	Saturated	81) Glucose	122) Propyl Alcohol
7) Acetylene	44) Calcium Hydroxide - 10%	82) Glue	123) Rum
8) Adipic Acid	45) Calcium Nitrite	83) Glycerine	124) Salicylic Acid
9) Aerosafe 2300	46) Cane Sugar Liquors	84) Glycol	125) Salt Water
10) Aerosafe 2300W	47) Carbon Monoxide	85) Hydrazine	126) Sea Water
11) Alkaline Solutions	48) Carbonic Acid	86) Hydrogen Gas	127) Silicone Oil
12) Aluminum Chloride	49) Castor Oil	87) Hydrogen Sulfide Wet	128) Silver Nitrate
13) Aluminum Fluoride	50) Catsup (Ketchup)	88) Ink (Printers)	129) Soap Solutions
14) Aluminum Nitrate	51) Chloroacetic Acid	89) Isobutyl Alcohol	130) Sodium Acetate
15) Aluminum Sulfate	52) Chocolate Syrup	90) Isopropyl Alcohol	131) Sodium Bicarbonate
16) Ammonia Anhydrous	53) Cider (Apple Juice)	91) Ketchup	132) Sodium Bisulfite
17) Ammonium Chloride	54) Citric Acid	92) Lactic Acid	133) Sodium Borate
18) Ammonium Hydroxide	Concentrated	93) Lead Acetate	134) Sodium Hydroxide
19) Ammonium Nitrate	55) Cod Liver Oil (Fish Oil)	94) Lime Sulfur	[To 50% Concentrate]
20) Ammonium Persulfate	56) Copper Cyanide	95) Magnesium Chloride	(Caustic Soda-Lye)
21) Ammonium Phosphate	57) Copper Sulfate	96) Magnesium Hydroxide	135) Steam
22) Ammonium Sulfate	58) Detergents Solutions	97) Magnesium Sulfate	136) Sugar Liquids
23) Amyl Acetate	59) Detergents General	98) Malt Beverages	137) Sulfur Dioxide Gas Dry
24) Aniline	60) Diacetone Alcohol	99) Mercury	138) Sulfur Dioxide Gas Wet
25) Anti-Freeze	(Acetal)	100) Methyl Acetate	139) Tannic Acid
(Alcohol Based)	61) Diethylene Glycol	101) Methyl Alcohol	140) Tricresyl Phosphate
26) Anti-Freeze	62) Ethyl Chloride Wet	102) Methyl Ethyl Ketone	141) Triethanolamine
(Glycol Based)	63) Ethylene Diamine	103) Milk	142) Vinegar
27) Arsenic Acid	64) Ethylene Glycol	104) Molasses	143) Water
28) Automatic Brake Fluid	65) Ferric Nitrate	105) Monoethanolamine	144) Water-Brine, Process,
29) Barium Chloride	66) Ferric Sulfate	106) Nickel Chloride	Beverage
30) Barium Hydroxide	67) Fluoboric Acid	107) Nickel Sulfate	145) Water, Acid Mine
31) Barium Sulfate	68) Formaldehyde	108) Nitrogen	146) Water, Distilled
32) Barium Sulfide	69) Freon C318	109) Oxygen	147) Water, Fresh
33) Beer	70) Freon K-142B	110) Ozone	148) Water, Salt
34) Beer (Alcohol Ind.)	71) Freon 114	111) Palm Oil	149) Whiskey
35) Beer (Beverage Ind.)	72) Freon 115	112) Petroleum	150) Whiskey
36) Beet Sugar Liquors	73) Freon 13	113) Phosphorus Trichloride	151) Wine
37) Benzaldehyde	74) Freon 13BL	114) Plating Solutions Chrome	152) Zinc Sulfate
38) Benzyl Alcohol	75) Freon 14	115) Potassium Acetate	
39) Blood,Meat/Juices		116) Potassium Chloride	

For purchasing and project quotes, please contact your local Pete's Plug® Sales Representative.

For more information, email Info@PetesPlug.com or call 281-646-9100.

Pete's Plug® Chemical Compatability - Nordel (Good)

1)	Acetate Solvents	40)	Olive Oil
2)	Acetic Anhydride	41)	Palmitic Acid
3)	Acid (Concentrated)	42)	Perchloric Acid
4)	Acid (Mild)	43)	Picric Acid
5)	Alcohol	44)	Propyl Acetate
6)	Almond Oil (Artificial)	45)	Propylene Oxide
7)	Ammonium Carbonate	46)	Pyridine
8)	Aniline Hydrochloride	47)	Pyroligneous Acid
9)	Animal Oil (Lard Oil)	48)	Sewage
10)	Carbolic Acid (Phenol)	49)	Stearic Acid
11)	Carbon Dioxide	50)	Sulfite Liquor
12)	Cellosolve, Acetate	51)	Sulfur Trioxide
13)	Cellosolve, Butyl	52)	Sulfurous Acid
14)	Cellosolve	53)	Tartaric Acid
15)	Chlorox (Bleach)	54)	Tetrahydrofuran
16)	Cottonseed Oil	55)	Tributyl Phosphate
17)	Cyclohexanone		
18)	Dibutyl Phthalate		
19)	Diethylamine		
20)	Dimethyl Aniline		
21)	Dimethyl Formamide		
22)	Dimethyl Phthalate		
23)	Dioctyl Phthalate		
24)	Epichlorohydrin Dry		
25)	Ethanolamine		
26)	Ethylene Chlorohydrin		
27)	Fluosilicic Acid		
28)	Freon 12		
29)	Furfural		
30)	Gallic Acid		
31)	Isopropyl Acetate		
32)	Maleic Acid		
33)	Methyl Cellosolve		
34)	Methyl Isobutyl Ketone		
35)	Nitric Acid - 10%		
36)	Nitric Acid - 25%		
37)	Nitric Acid Dilute		
38)	Nitrobenzene		
39)	Nitromethane		

For purchasing and project quotes, please contact your local Pete's Plug® Sales Representative.
For more information, email Info@PetesPlug.com or call 281-646-9100.

Pete's Plug® Chemical Compatability - Brass (Excellent)

- 1) Acetaldehyde
- 2) Acetamide
- 3) Acetylene
- 4) Alcohol
- 5) Ammonium Phosphate
- 6) Amyl Acetate
- 7) Asphalt
- 8) Beer (Alcohol Ind.)
- 9) Benzaldehyde
- 10) Butane
- 11) Carbon Dioxide
- 12) Castor Oil
- 13) Cottonseed Oil
- 14) Cyclohexanone
- 15) Diacetone Alcohol
(Acetal)
- 16) Ethyl Chloride Wet
- 17) Ethylene Glycol
- 18) Fluosilicic Acid
- 19) Freon 12
- 20) Fuel Oil
- 21) Gasoline (Aviation)
- 22) Glucose
- 23) Glycerine
- 24) Hexane
- 25) Hydrogen Gas
- 26) Isooctane
- 27) Isopropyl Alcohol
- 28) Methyl Alcohol
- 29) Methyl Ethyl Ketone
- 30) Mineral Oil
- 31) Oxygen
- 32) Potassium Nitrate
- 33) Propyl Alcohol
- 34) Sodium Acetate
- 35) Water, Distilled

For purchasing and project quotes, please contact your local Pete's Plug® Sales Representative.
For more information, email Info@PetesPlug.com or call 281-646-9100.

Pete's Plug® Chemical Compatability - Brass (Good)

- 1) Beer
- 2) Borax
- 3) Cane Sugar Liquors
- 4) Gelatin
- 5) Linseed Oil
- 6) Methyl Cellosolve
- 7) Molasses
- 8) Sea Water
- 9) Shellac (Bleached)
- 10) Shellac (Orange)
- 11) Soap Solutions
- 12) Sodium Bicarbonate
- 13) Whiskey
- 14) Wines

For purchasing and project quotes, please contact your local Pete's Plug® Sales Representative.
For more information, email Info@PetesPlug.com or call 281-646-9100.

Pete's Plug® Chemical Compatability - Stainless Steel (Excellent)

1)	Acetaldehyde	37)	Barium Sulfate	71)	Cyclohexanol	109)	Fuel Oil
2)	Acetamide	38)	Barium Sulfide	72)	Cyclohexanone	110)	Gasoline (Avaition)
3)	Acetate Solvents	39)	Beer	73)	Detergent Solutions	111)	Gelatin
4)	Acetic Acid	40)	Beer (Alcohol Ind.)	74)	Detergents General	112)	Glucose
5)	Acetic Acid Glacial	41)	Beer (Beverage Ind.)	75)	Diacetone Alcohol	113)	Glue
6)	Acetone 70°F	42)	Beet Sugar Liquids		(Acetal)	114)	Glycerine
7)	Acetophenone	43)	Beet Sugar Liquors	76)	Dibutyl Phthalate	115)	Grape Juice
8)	Acetylene	44)	Benzaldehyde	77)	Diethylene Glycol	116)	Hexane
9)	Adipic Acid	45)	Benzene Sulfonic Acid	78)	Dimethyl Formamide	117)	Honey
10)	Aero Lubriplate	46)	Benzyl Alcohol	79)	Dimethyl Phthalate	118)	Hydraulic Fluid
11)	Areosafe 2300	47)	Blood	80)	Dioctyl Phthalate		(Petroleum)
12)	Areoshell 17 Grease		(Meat Juices – Cold)	81)	Epichlorohydrin Dry	119)	Hydrazine
13)	Areoshell 7A Grease	48)	Borax	82)	Ethane	120)	Hydrogen Gas
14)	Alcohol	49)	Boric Acid	83)	Ethanolamine	121)	Hydrogen Sulfide Wet
15)	Alkaline Solutions	50)	Brake Fluid	84)	Ethyl Chloride Wet	122)	Ink (Printers)
16)	Aluminum Nitrate		(Non-Petroleum)	85)	Ethylene Diamine	123)	Isobutyl Alcohol
17)	Aluminum Sulfate	51)	Butane	86)	Ethylene Glycol	124)	Isoctane
18)	Ammonia Anhydrous	52)	Calcium Chloride	87)	Fatty Acid	125)	Isopropyl Acetate
19)	Ammonium Carbonate		Saturated	88)	Ferric Sulfate	126)	Isopropyl Alcohol
20)	Ammonium Hydroxide	53)	Calcium Hydroxide 10%	89)	Fluoboric Acid	127)	JP-X
21)	Ammonium Nitrate	54)	Calcium Nitrate	90)	Formaldehyde	128)	Ketchup
22)	Ammonium Persulfate	55)	Cane Juice	91)	Freon BF	129)	Lard Oil (Cold)
23)	Ammonium Phosphate	56)	Cane Sugar Liquors	92)	Freon C318	130)	Lard Oil (Hot)
24)	Ammonium Sulfate	57)	Carbolic Acid (Phenol)	93)	Freon K-142B	131)	Lime Sulfur
25)	Amyl Acetate	58)	Carbon Dioxide	94)	Freon PCA	132)	Linseed Oil
26)	Aniline	59)	Carbon Monoxide	95)	Freon 112	133)	Lubricating Oil
27)	Animal Oil (Lard Oil)	60)	Carbonic Acid	96)	Freon 113	134)	Magnesium Hydroxide
28)	Anti-Freeze	61)	Castor Oil	97)	Freon 114	135)	Maleic Acid
	(Alcohol-Base)	62)	China Wood Oil	98)	Freon 114B2	136)	Malt Beverages
29)	Anti-Freeze		(Tung Oil)	99)	Freon 115	137)	Mash
	(Glycol Base)	63)	Chlorox (Bleach)	100)	Freon 12	138)	Mercury
30)	Arsenic Acid	64)	Chocolate Syrup	101)	Freon 13	139)	Methane
31)	Asphalt	65)	Cider (Apple Juice)	102)	Freon 13BL	140)	Methyl Acetate
32)	Automatic Brake Fluid	66)	Citric Acid	103)	Freon 14	141)	Methyl Alcohol
33)	Automatic		Concentrated	104)	Freon 21	142)	Methyl Ethyl Ketone
	Transmission Fluid	67)	Cod Liver Oil (Fish Oil)	105)	Freon 22	143)	Methyl Isobutyl Ketone
34)	Barbeque Sauce	68)	Copper Cyanide	106)	Freon 31	144)	Milk
35)	Barium Chloride	69)	Copper Sulfate	107)	Freon 32	145)	Mineral Oil
36)	Barium Hydroxide	70)	Cottonseed Oil	108)	Freon 502	146)	Molasses

For purchasing and project quotes, please contact your local Pete's Plug® Sales Representative.
For more information, email Info@PetesPlug.com or call 281-646-9100.

Pete's Plug® Chemical Compatability - Stainless Steel (Excellent)

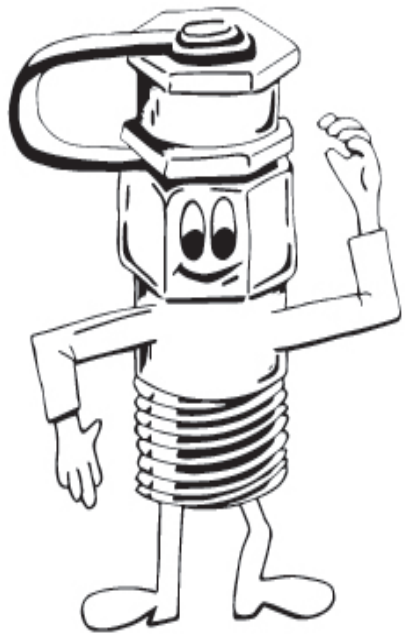
147)	Nitric Acid - 10%	184)	Transmission Fluid, Type A
148)	Nitric Acid - 25%	185)	Tributyl Phosphate
149)	Nitric Acid Dilute	186)	Triethanolamine
150)	Nitrobenzene	187)	Tung Oil
151)	Nitrogen	188)	Vinegar
152)	Nitromethane	189)	Water
153)	Olive Oil	190)	Water, Distilled
154)	Oxygen	191)	Water, Fresh
155)	Palm Oil	192)	Whiskey
156)	Palmitic Acid	193)	Whiskey
157)	Petroleum	194)	Wine
158)	Phosphorus Trichloride	195)	Zinc Sulfate
159)	Plating Solutions Chrome		
160)	Potassium Hydroxide		
161)	Potassium Sulfate		
162)	Propane		
163)	Propyl Acetate		
164)	Propyl Alcohol		
165)	Propylene Oxide		
166)	Pyridine		
167)	Pyroligneous Acid Rum		
168)	Sewage		
169)	Shellac (Bleached)		
170)	Shellac (Orange)		
171)	Silicone Oil		
172)	Silver Cyanide		
173)	Soap Solutions		
174)	Sodium Hydroxide (Caustic Soda-Lye) [To 50% Concentrations]		
175)	Soy Sauce		
176)	Steam		
177)	Stearic Acid		
178)	Sugar Liquids		
179)	Sulfur Dioxide Gas Dry		
180)	Tannic Acid		
181)	Tetra Ethyl Lead		
182)	Tetrahydrofuran		
183)	Transformer Oil		

For purchasing and project quotes, please contact your local Pete's Plug® Sales Representative.
For more information, email Info@PetesPlug.com or call 281-646-9100.

Pete's Plug® Chemical Compatability - Stainless Steel (Good)

- | | | | |
|-----|-------------------------|-----|-----------------------------------|
| 1) | Acetic Anhydride | 40) | Sulfur Trioxide |
| 2) | Almond Oil (Artificial) | 41) | Sulfurous Acid |
| 3) | Catsup (Ketchup) | 42) | Tartaric Acid |
| 4) | Cellosolve, Acetate | 43) | Tricresyl Phosphate |
| 5) | Cellosolve, Butyl | 44) | Water-Brine, Process,
Beverage |
| 6) | Cellosolve | 45) | Water, Acid Mine |
| 7) | Chloroacetic Acid | 46) | Water, Salt |
| 8) | Creosote Hot | | |
| 9) | Diethylamine | | |
| 10) | Ethylene Chlorohydrin | | |
| 11) | Ferric Nitrate | | |
| 12) | Furfural | | |
| 13) | Gallic Acid | | |
| 14) | Glycol | | |
| 15) | Lactic Acid | | |
| 16) | Lead Acetate | | |
| 17) | Magnesium Chloride | | |
| 18) | Magnesium Sulfate | | |
| 19) | Methyl Cellosolve | | |
| 20) | Monochloroacetic Acid | | |
| 21) | Monoethanolamine | | |
| 22) | Nickel Chloride | | |
| 23) | Nickel Sulfate | | |
| 24) | Ozone | | |
| 25) | Picric Acid | | |
| 26) | Potassium Acetate | | |
| 27) | Potassium Chloride | | |
| 28) | Potassium Cyanide | | |
| 29) | Potassium Dichromate | | |
| 30) | Potassium Nitrate | | |
| 31) | Salicylic Acid | | |
| 32) | Salt Water | | |
| 33) | Silver Nitrate | | |
| 34) | Sodium Acetate | | |
| 35) | Sodium Bicarbonate | | |
| 36) | Sodium Bisulfite | | |
| 37) | Sodium Borate | | |
| 38) | Sulfite Liquor | | |
| 39) | Sulfur Dioxide Gas Wet | | |

For purchasing and project quotes, please contact your local Pete's Plug® Sales Representative.
For more information, email Info@PetesPlug.com or call 281-646-9100.



**For a listing of our Sales Representatives around the world,
please visit www.PetesPlug.com**